

Model: JSMA-PIH30A3KB

| No. | Item             | Symbol | Unit   | Specification    | No. | Item                 | Symbol | Unit               | Specification                 |
|-----|------------------|--------|--------|------------------|-----|----------------------|--------|--------------------|-------------------------------|
| 1   | Drive            | -      | -      | 3 $\phi$ 220 VAC | 13  | Rotor Inertia        | Jm     | kg-cm <sup>2</sup> | 42.36 $\pm$ 10%               |
| 2   | Cooling Method   | -      | -      | Totally Enclosed | 14  | Rated Power Rate     | Q-R    | Kw/s               | 86.12                         |
| 3   | Exciting Method  | -      | -      | Permanent Magnet | 15  | Resistance           | Ra     | $\Omega$           | 0.275 $\pm$ 10%/2 $\phi$      |
| 4   | Resolution       | -      | -      | 23 bit INC       | 16  | Inductance           | L      | mH                 | 6.8 $\pm$ 10% / 2 $\phi$      |
| 5   | Rated Output     | P-R    | W      | 3000             | 17  | Mech. Time Constant  | Tm     | ms                 | 1.12 $\pm$ 10%                |
| 6   | Rated Torque     | T-R    | N-m    | 19.1             | 18  | Elect. Time Constant | Te     | ms                 | 24.69 $\pm$ 10%               |
| 7   | Max. Torque      | T-max  | N-m    | 47.75            | 19  | Insulation Class     | -      | -                  | Class F                       |
| 8   | Rated Speed      | N-R    | rpm    | 1500             | 20  | Operation Temp.      | T      | $^{\circ}$ C       | 0-40                          |
| 9   | Rated Current    | I-R    | A      | 16               | 21  | Operation Humd.      | RH     | %                  | <80                           |
| 10  | Max. Current     | I-max  | A      | 40               | 22  | Storage Temp.        | T      | $^{\circ}$ C       | -20 $^{\circ}$ -60 $^{\circ}$ |
| 11  | Torque Constant  | Kt     | N-m/A  | 1.19 $\pm$ 10%   | 23  | Storage Humd.        | RH     | %                  | <80                           |
| 12  | Voltage Constant | Ke     | V/krpm | 79.3 $\pm$ 10%   | 24  | Weight               | W      | kgw                | 21.0                          |

| Pin | Signal |
|-----|--------|
| A   | U      |
| B   | V      |
| C   | W      |
| D   | FG     |

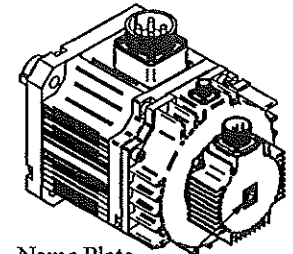
Motor Wiring

| Pin | Signal |
|-----|--------|
| A   | 0      |
| B   | 24V    |
| C   |        |

Brake Wiring

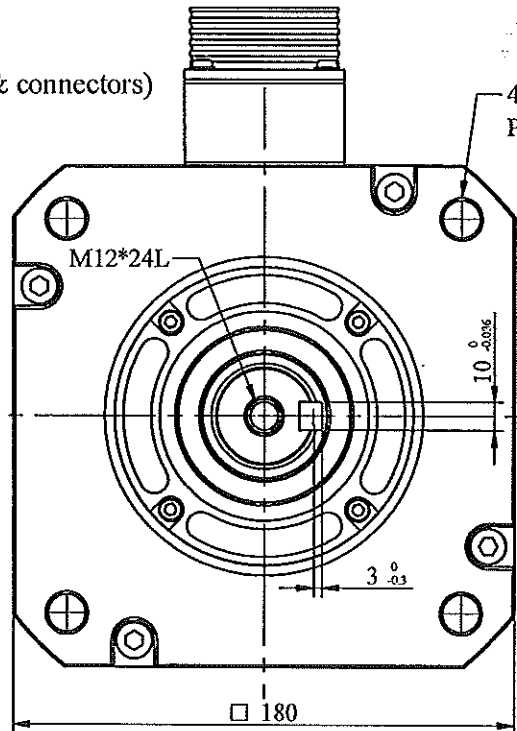
| PIN | Signal |
|-----|--------|
| B   | +5V    |
| I   | 0V     |
| A   |        |
| C   |        |
| H   | SD+    |
| D   | SD-    |
| G   |        |
| E   |        |
| F   | FG     |

Encoder Wiring



Name Plate for Notice

NOTE:  
Motor to be IP67.  
(excluding the shaft opening & connectors)



Do not Hammer!  
Name Plate for Notice

**AC SERVO MOTOR**

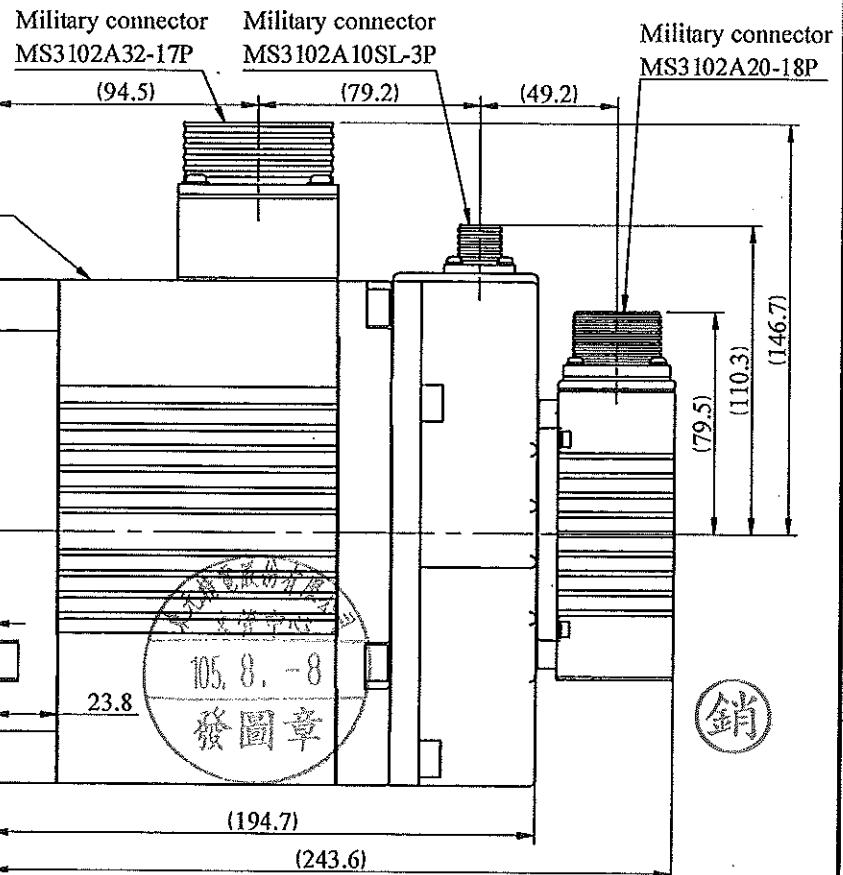
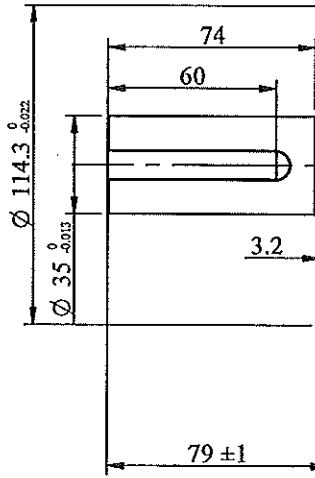
Model: JSMA-PIH30A3KB  
Pr: 3.0 KW ; Nr: 1500 rpm  
Ir: 16 A , Tr: 19.1 N-m

NO. \_\_\_\_\_

**TECO ELECTRIC & MACHINERY CO., LTD.**  
MADE IN TAIWAN

Name Plate for Spec

4- $\phi$ 13.5  
P.C.D.  $\phi$ 200 $\pm$ 0.1  
Name Plate for Spec



| STANDARD TOLERANCE |            |
|--------------------|------------|
| X                  | $\pm$ 0.5  |
| .X                 | $\pm$ 0.2  |
| .XX                | $\pm$ 0.05 |
| ANGLE              | $\pm$ 30'  |

| MATERIAL | REV | DESCRIPTION | SIGNATURE | DATE | APVD | CHKD     | CHKD | DWN  | SIGNATURE | DATE     | SCALE        | UNIT    | mm                | NAME                        | TITLE          |
|----------|-----|-------------|-----------|------|------|----------|------|------|-----------|----------|--------------|---------|-------------------|-----------------------------|----------------|
|          |     |             |           |      | Leon | Michelle |      | Leon | Michelle  | 06-20-16 | 3RD .A.P     |         |                   | Servo Motor Outline Drawing | JSMA-PIH30A3KB |
|          |     |             |           |      |      |          |      |      |           |          | Dept. Design | DWG.NO. | D01B18302H3BZAD01 |                             |                |